

ChloroMate™

SP Series Salt Water Pool Systems



Naturally simple
sanitation of your
swimming pool water



Premium Quality, Self Cleaning, Simple Operation

Chloromate SP Series salt water pool systems utilise low levels of common salt (3500ppm) to sanitise the pool water. The mild salt water is electrolysed using an advanced process performed by a fully regulated electronic power supply and premium quality self cleaning electrolytic cell providing virtual maintenance free operation. Models available to suit the majority of swimming pool applications from small patio pools to large commercial installations. Suitable for new and existing pools of various surfaces.

Sanitise your pool water the pure and healthy way with Chloromate. Naturally simple.

Advantages

- No handling or storing of chlorine
- Environmentally friendly.
- Fully automatic, safe and simple to use
- Non irritating to skin and eyes
- Sparkling clear pool water
- Mild salt water has therapeutic benefits
- Suitable for all pool surfaces
- 2 year full warranty
- Plus extra 3 year pro-rata warranty on cell



Features

- High flow rate cell
- Cell output LED indicators
- Premium quality weather proof cabinet
- Polarity indicator
- Water flow detector
- Easy to set quartz time clock with battery back up
- Advanced reliable electronic technology
- Simple operation
- PCB controlled system protection
- Premium quality self cleaning cell electrode

SPECIFICATION TABLE

MODEL	VOLTS (Vac) Input	AMPS* (Aac) Input	Power* Consumption (Watts)	AMPS* (Adc) Output	VOLTS* (Vdc) Output	Frequency (Hz)	Weight (kg)	Dimensions (cm)
SP15	210-265	0.80	188.5	15.0	8.89	50	9.2	41L x 35W x 19H
SP25	210-265	1.34	318.0	25.0	8.14	50	10.9	41L x 35W x 19H
SP35	210-265	0.99	227.5	17.5	8.85	50	12.0	41L x 35W x 19H
SP45	210-265	1.49	320.7	22.5	8.90	50	13.5	41L x 35W x 19H
SP55	210-265	1.58	352.0	27.5	8.35	50	14.3	41L x 35W x 19H

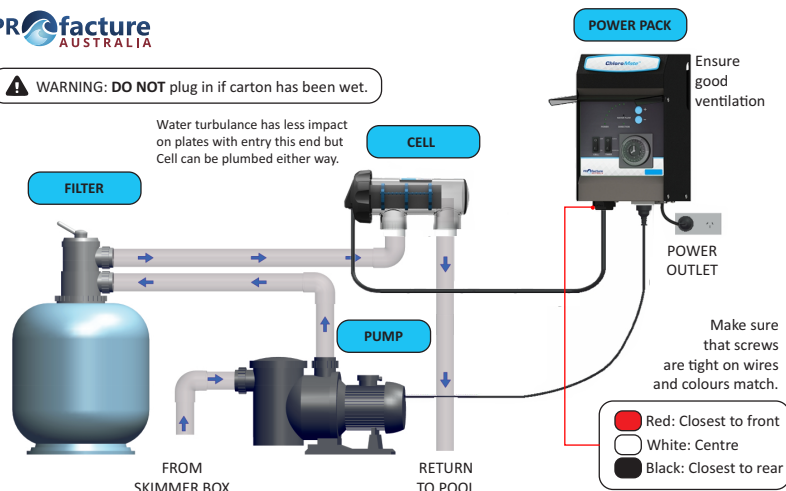
CHLORINE PRODUCTION

MODEL	Per Hour			Over 8 Hours		
	Chlorine Output	Cal.hypo. Equivalent (65%)	Sod.hypo. Equivalent (12.5%)	Chlorine Output	Cal.hypo. Equivalent (65%)	Sod.hypo. Equivalent (12.5%)
SP15	15g	23g	120ml	120g	184g	0.96Lt
SP25	25g	38g	200ml	200g	304g	1.60Lt
SP35	35g	54g	280ml	280g	432g	2.24Lt
SP45	45g	69g	360ml	360g	552g	2.88Lt
SP55	55g	85g	440ml	440g	680g	3.52Lt

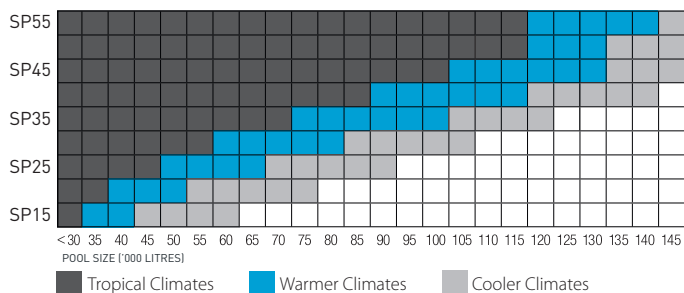
INSTALLATION GUIDE



WARNING: DO NOT plug in if carton has been wet.



CHLORINATOR SIZING CHART



Sizing Chart provided as a guide only. Consult your Local Chloromate dealer for the correct system, size and specification to suit your needs.

Commercial models available upon request
AUTHORISED DEALER: